

## Microsoft Security Essentials

**Product Name:** Microsoft Security Essentials (MSSE)

**Product Version:** 2

**Product Cost:** Free to everyone with a activated copy of Windows

**Product Registration, Activation and License Requirements:** Activated automatically since it's free.

**Operating System Compatibility:** Windows XP SP3, Vista and 7

**System software dependencies:** Internet Explorer 6 or later, Mozilla Firefox 2.0 or later.

**System Hardware dependencies for XP:** 500MHz processor, 256MB of RAM, 200MB disk space, 800x600 VGA resolution or higher, Internet connection.

**System Hardware dependencies for Vista and 7:** 1GHz processor, 1GB of RAM, 200MB disk space, 800x600 VGA resolution or higher, Internet connection.

**Vendor Web Site for support and product access:**

[http://www.microsoft.com/security\\_essentials/support.aspx?mkt=en-us#mainNav](http://www.microsoft.com/security_essentials/support.aspx?mkt=en-us#mainNav)

**Date Evaluated by PCS:** 3/10/2011

**Available from:** [http://www.microsoft.com/security\\_essentials/](http://www.microsoft.com/security_essentials/)

**Test Install Performed on:** 3/10/2011

**Installation, Setup and Configuration:**

- 1) Uninstall any other antivirus that you are currently using.
- 2) Go to [http://www.microsoft.com/security\\_essentials/](http://www.microsoft.com/security_essentials/) and click the big, blue Download Now button in the middle of the page.



- 3) A window will pop up asking you which version to download. Pick the version for your Operating System.

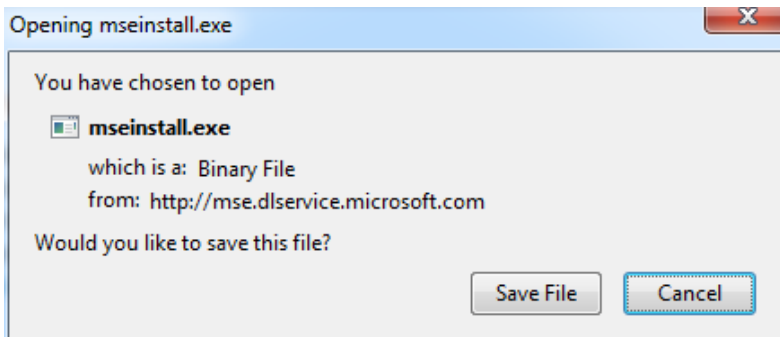
[CLOSE \[X\]](#)**Download Microsoft Security Essentials**

Microsoft Security Essentials is available in many locales and languages. To download Microsoft Security Essentials, choose your preferred locale or language from the list below. Next, choose your operating system to begin the download process. If you're unsure which operating system you have, please visit [Microsoft Support](#).

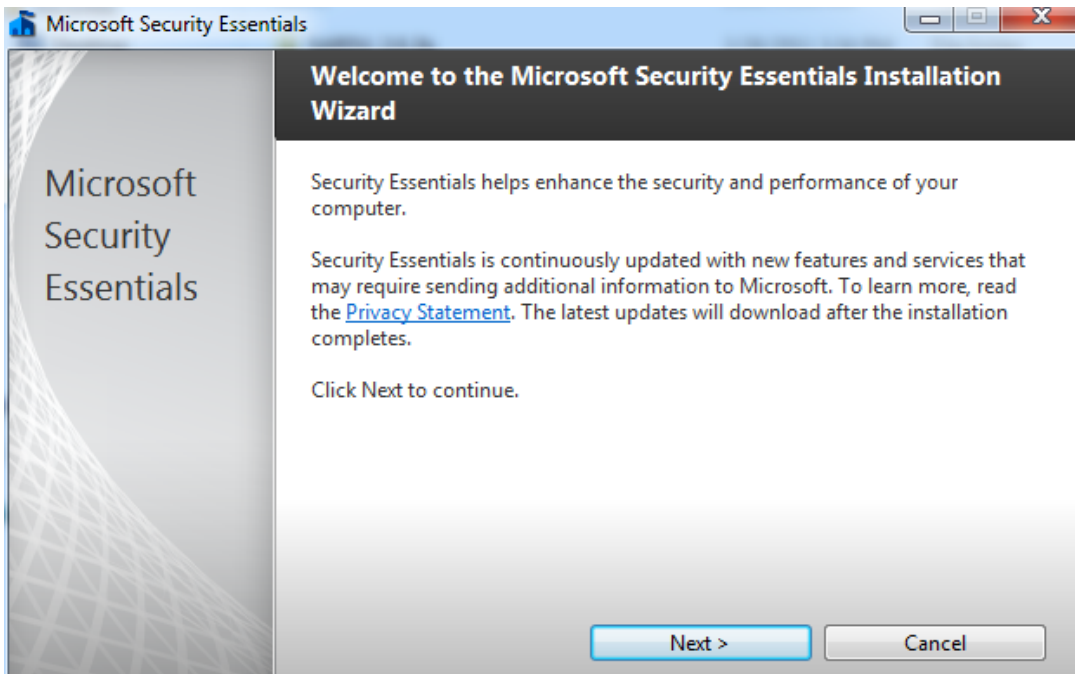
**Locale or Language****Operating System**

- [Windows XP 32-bit](#)
- [Windows Vista/Windows 7 32-bit](#)
- [Windows Vista/Windows 7 64-bit](#)

- 4) If you're using Internet Explorer, pick the option to save the download and remember where it saves to. If you're using Mozilla Firefox, a window will pop up asking you if you want to save the file, do so.



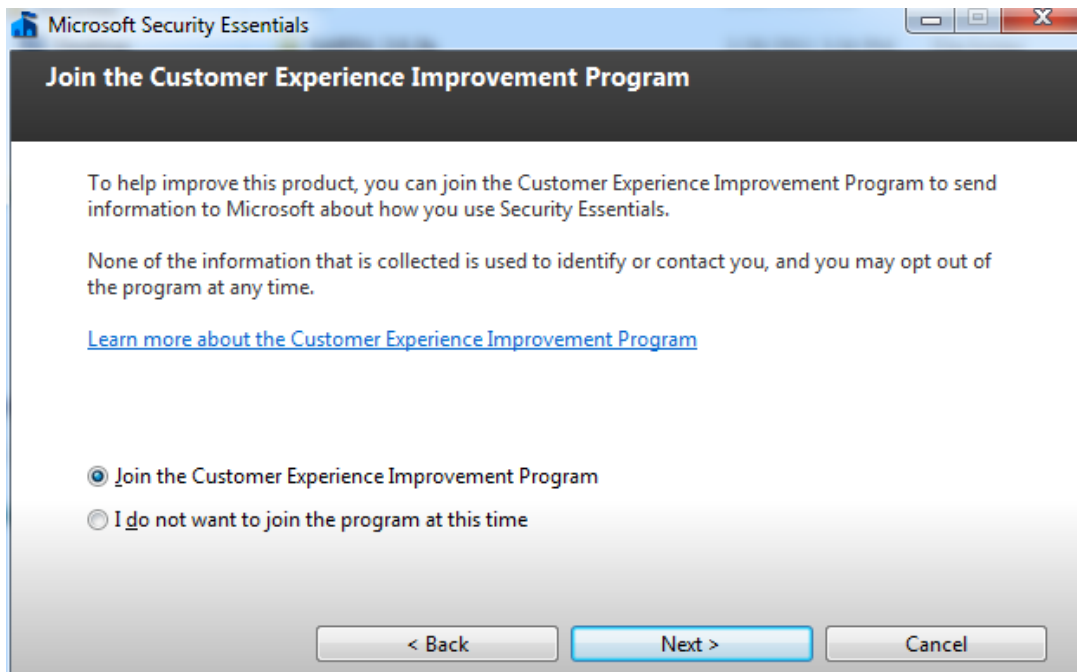
- 5) After the download finishes, go to the folder it saved to. Find the file called mseinstall.exe and double-click it to run it. When this window comes up, click "Next".



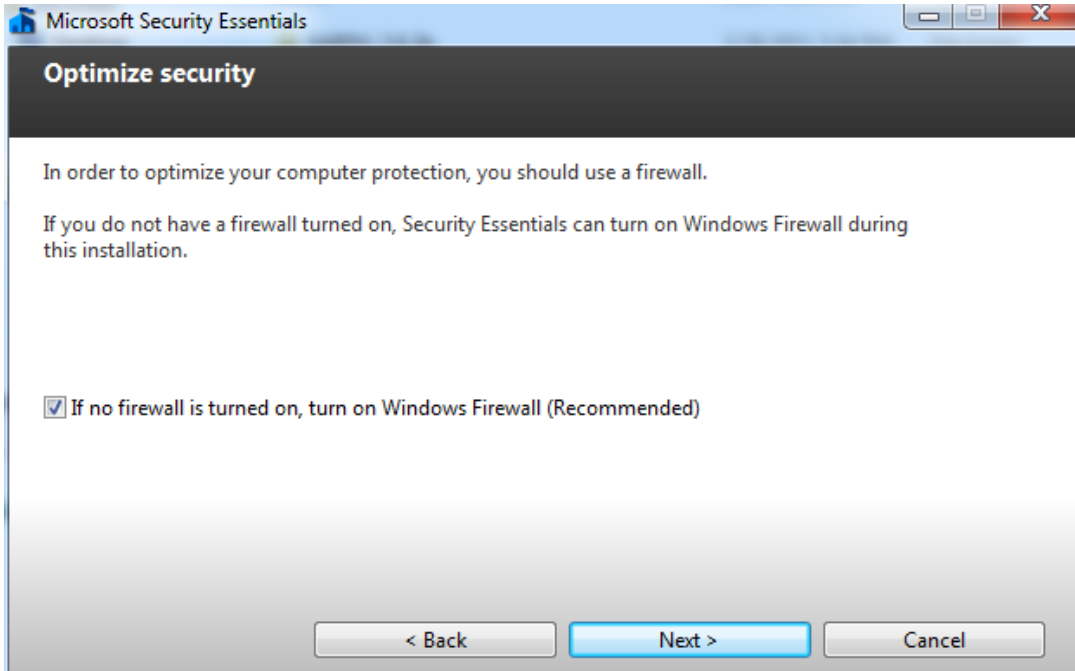
- 6) The next screen will ask you to accept the Software License Terms. Do so by clicking “I accept.”



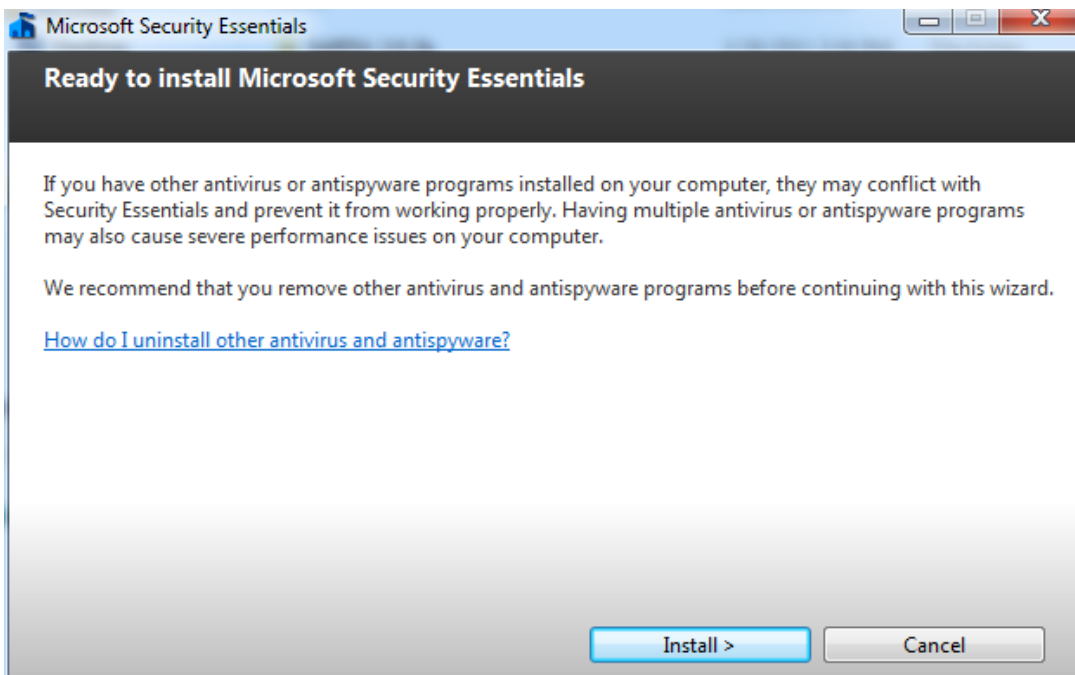
- 7) On the next page, leave the option picked and select “Next.”



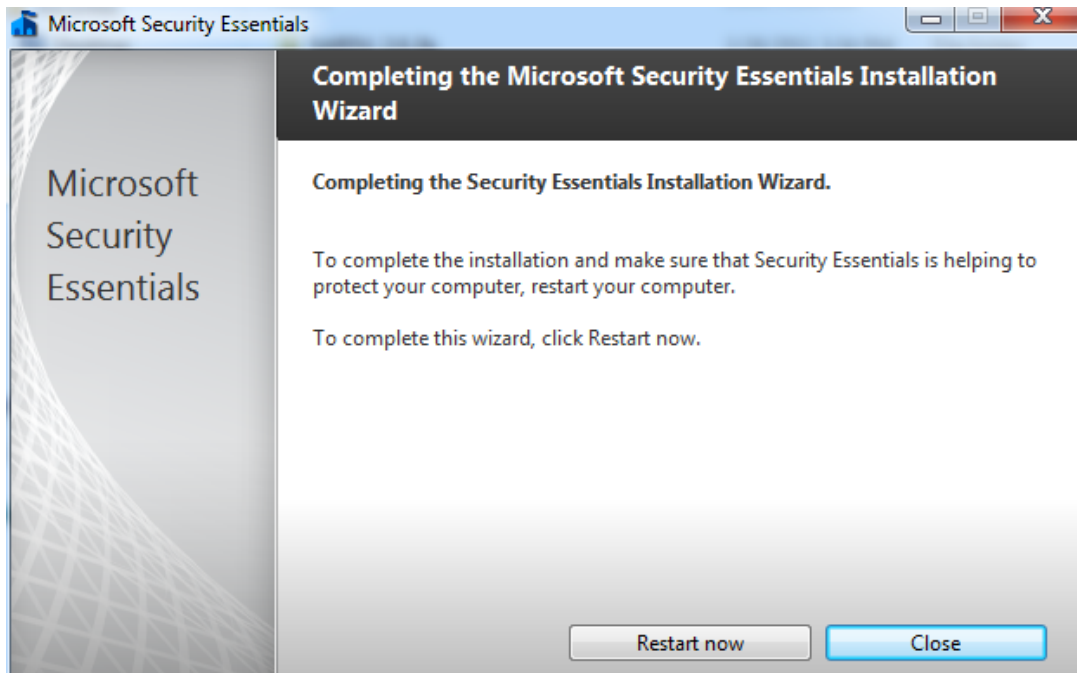
- 8) After that, leave the option selected for turning on Windows Firewall and select “Next” again.



- 9) The next page warns you about not uninstalling other antivirus software that is installed on your computer. If you have already removed them, then click “Install”. If you haven’t, then remove the other programs before you proceed.



- 10) When the installation finishes, it will prompt you to restart your computer. Do so by clicking "Restart Now".



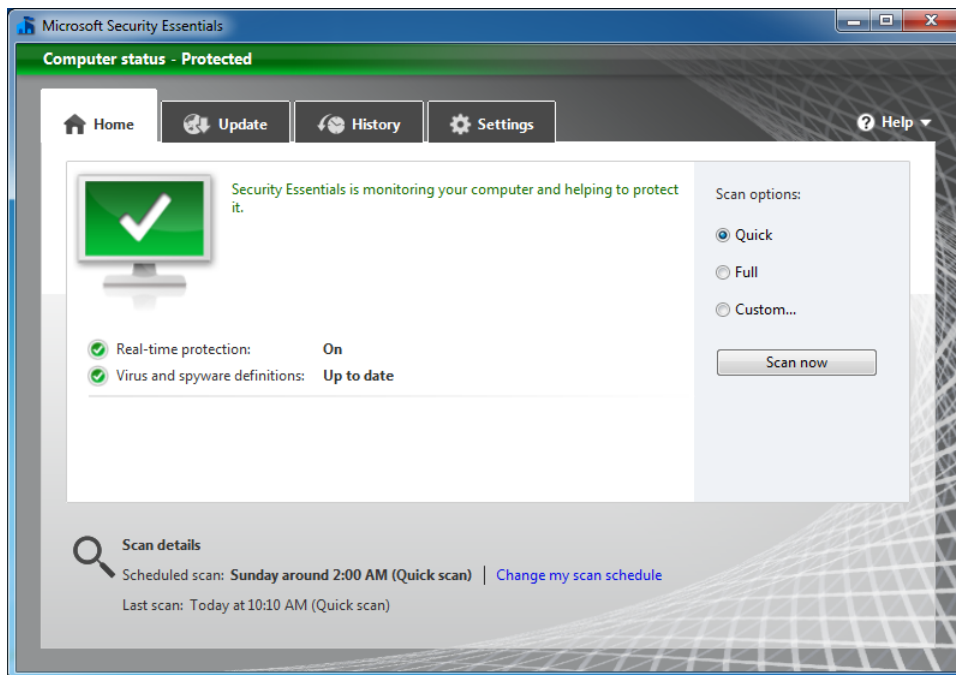
- 11) The installation is now complete, and Microsoft Security Essentials is ready for use.

## Basic use of MSSE:

Microsoft Security Essentials automatically starts with Windows, which is indicative of the MSSE icon in the task manager.

### Home Tab

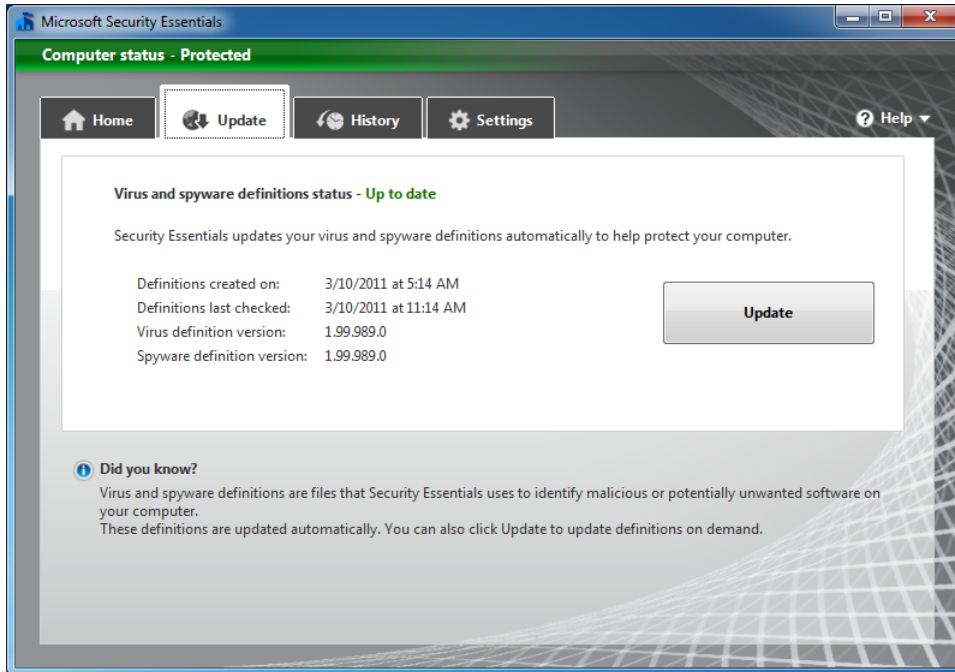
- On the home tab, you can easily tell whether your computer is protected or not by the green check on the computer monitor on the top left. There are also options to pick a Quick, Full or Custom scan at the click of a button. To start one of these scans, simply click "Scan now."



- At the bottom, there is a line of blue text that says Change my scan schedule. If you click this, it will take you to the Settings Tab automatically to change the schedule (shown in more detail later).

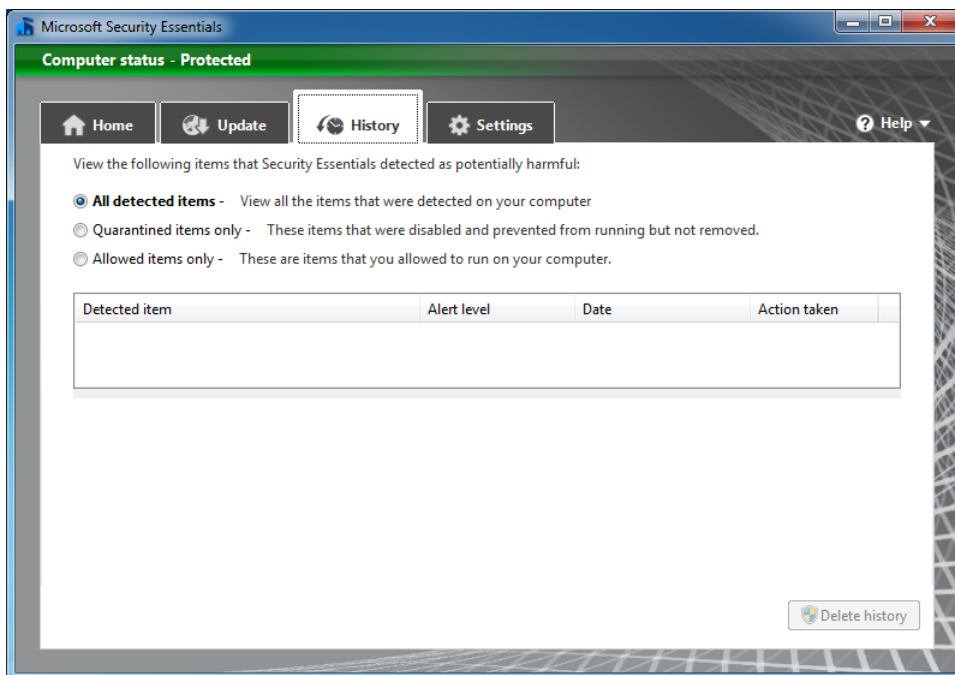
### Update Tab

- This tab simply contains the update information about MSSE. This program updates automatically, but if you wish to check for newer updates before you run a scan on your computer then click the "Update" button.



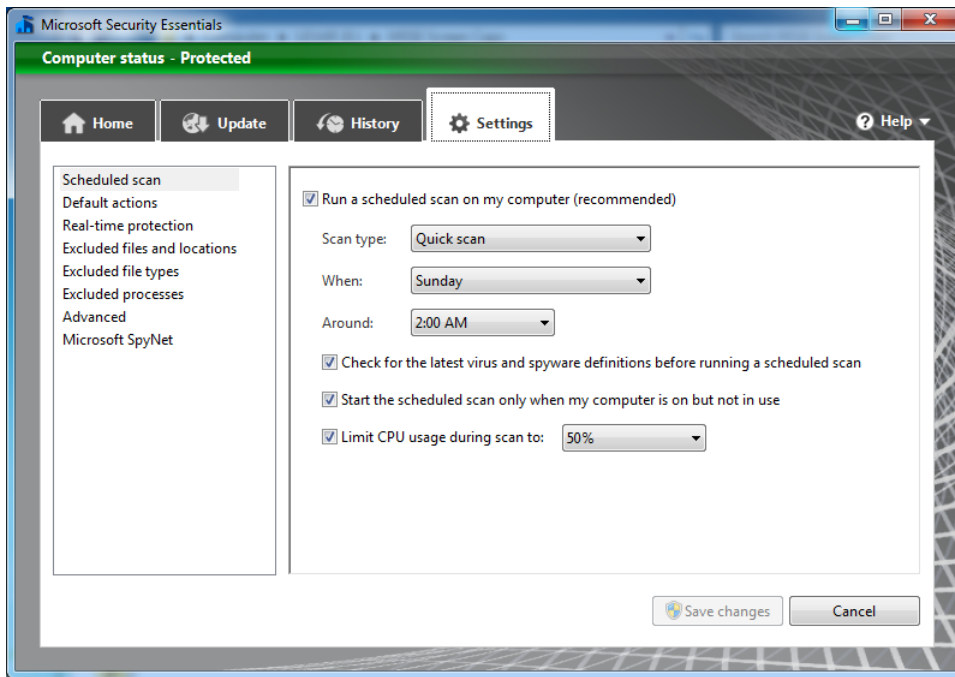
### History Tab

- In the History Tab, you will find all of your detected, quarantined and allowed items listed.

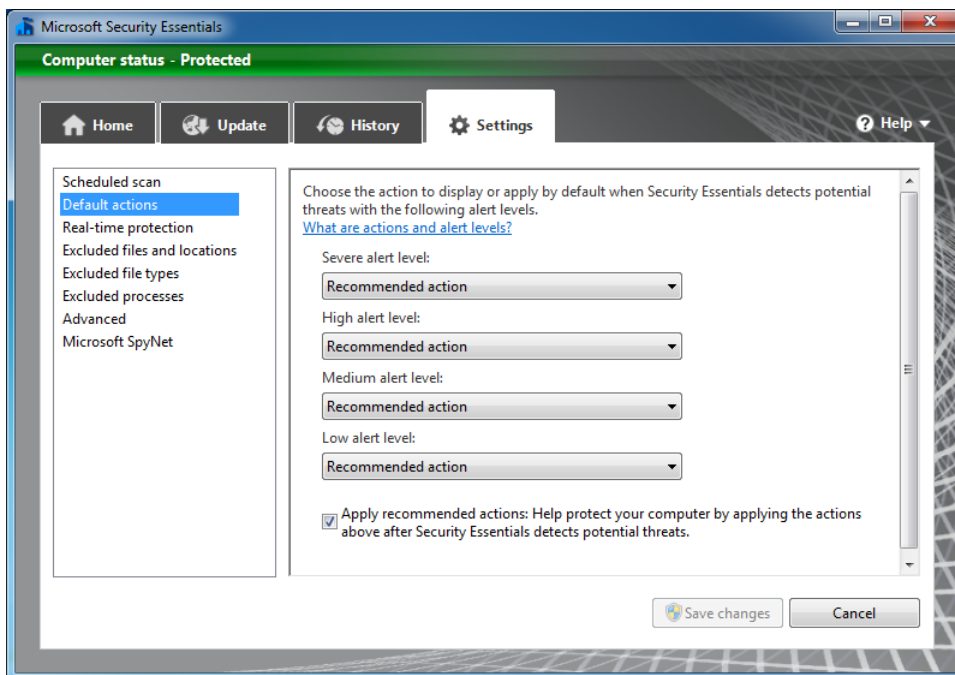


### Settings Tab

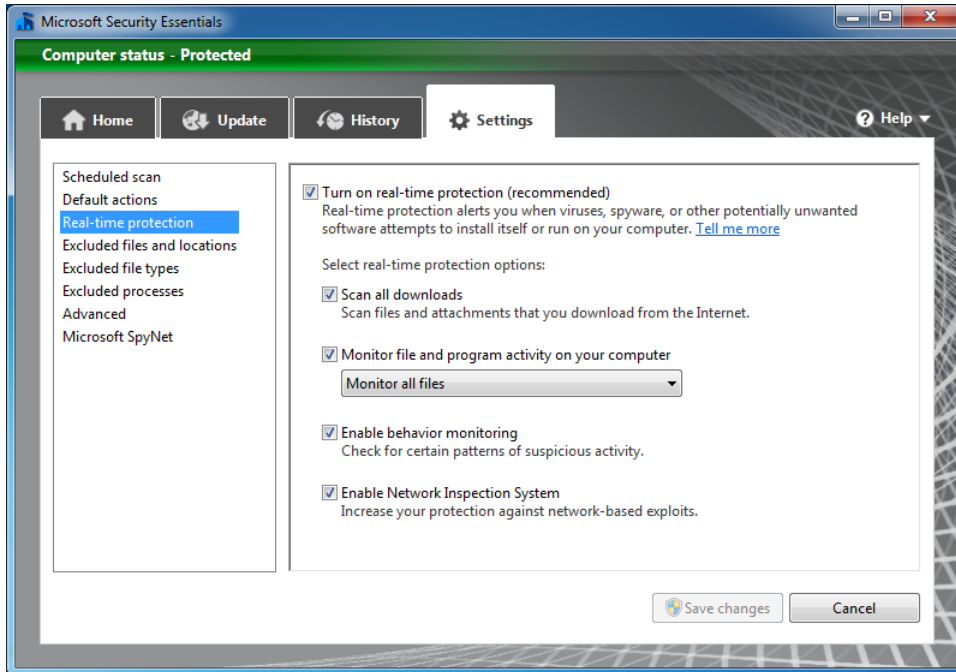
- The first page of the Settings Tab is your Scheduled Scan. This lets you run any of the three scans automatically when you want to.



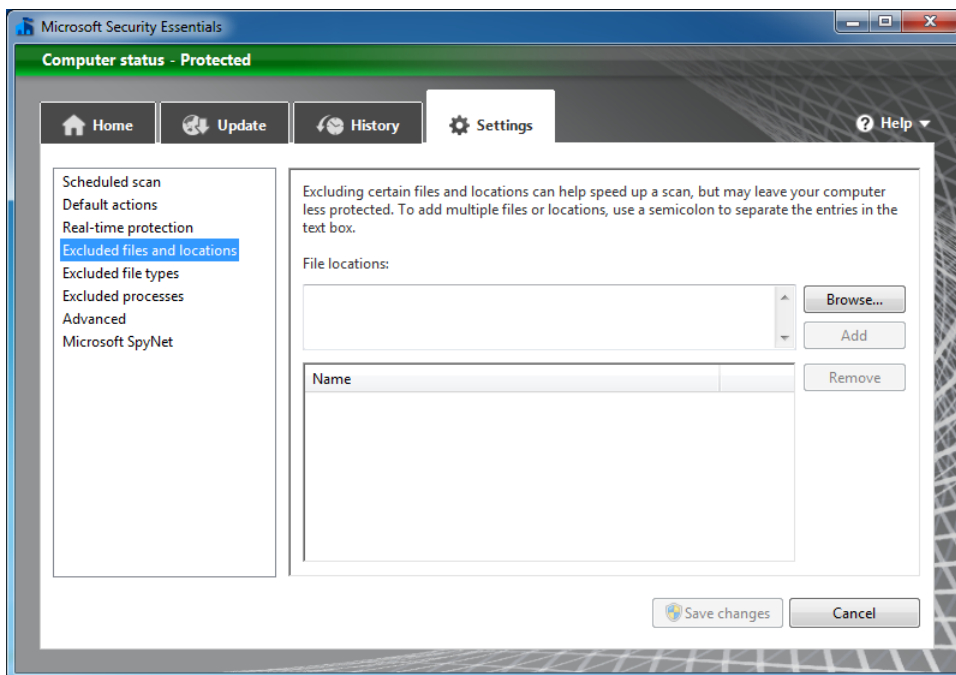
- The next page is Default Actions. Here you can change MSSE's actions when you have a Low, Medium, High or Severe alert.



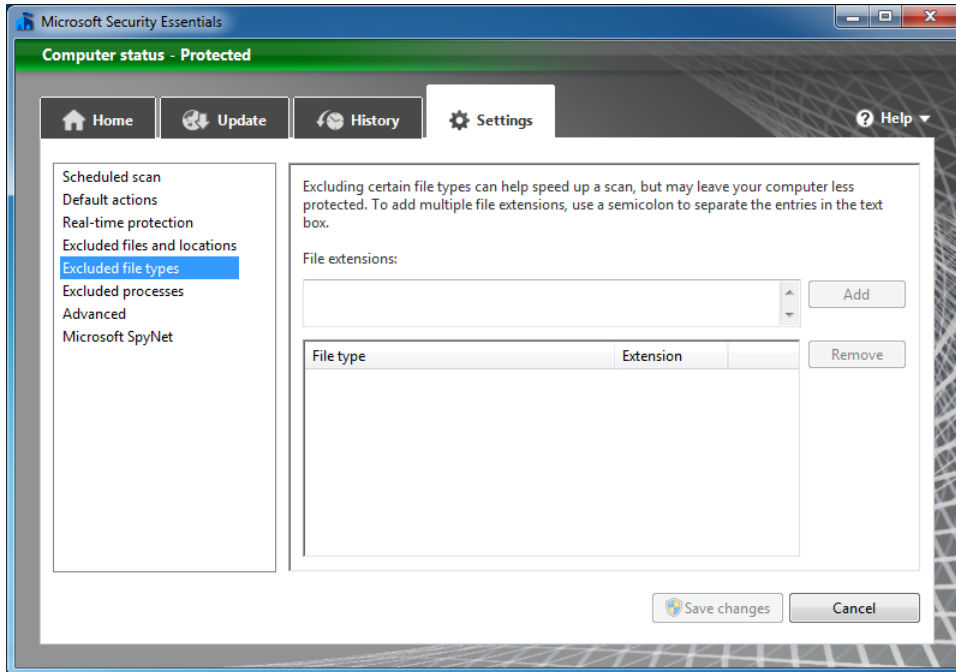
- Real-time Protection comes after Default Actions. The Real-time Protection page allows you to control what MSE looks at any time you're using the computer.



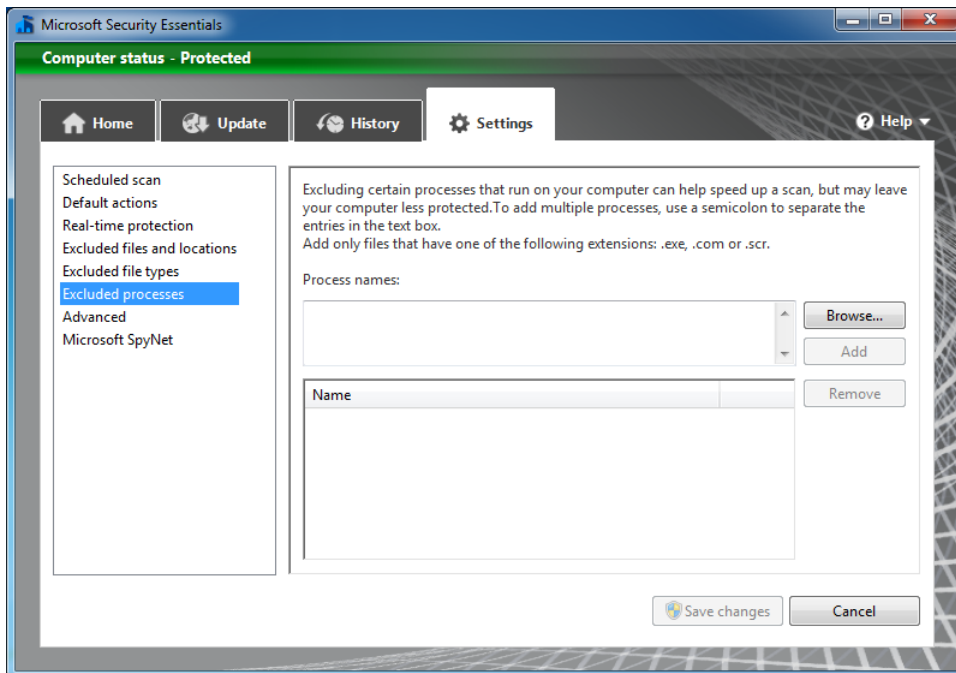
- Excluded Files and Locations are any files or folders that you do not wish MSE to scan at any time. To add a file or folder, you simply click Browse and go to the folder. When you get done, click "Add" and it won't be scanned. Always use caution when excluding items from a scan as they can leave your PC more vulnerable.



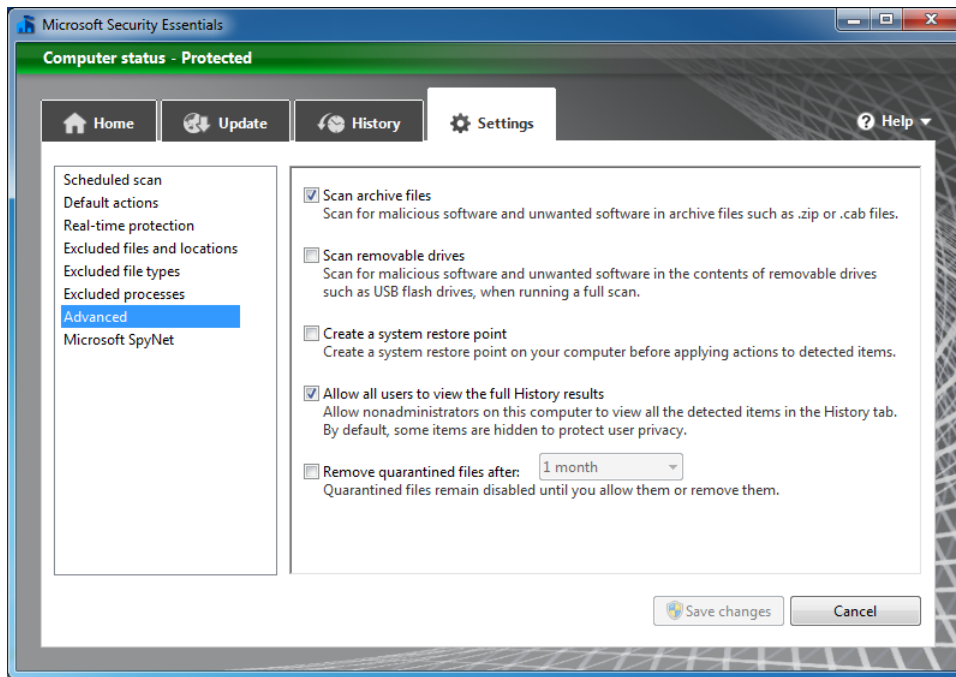
- Excluded File Types will have MSSE overlook any files of a particular type (for example, .txt or .exe).



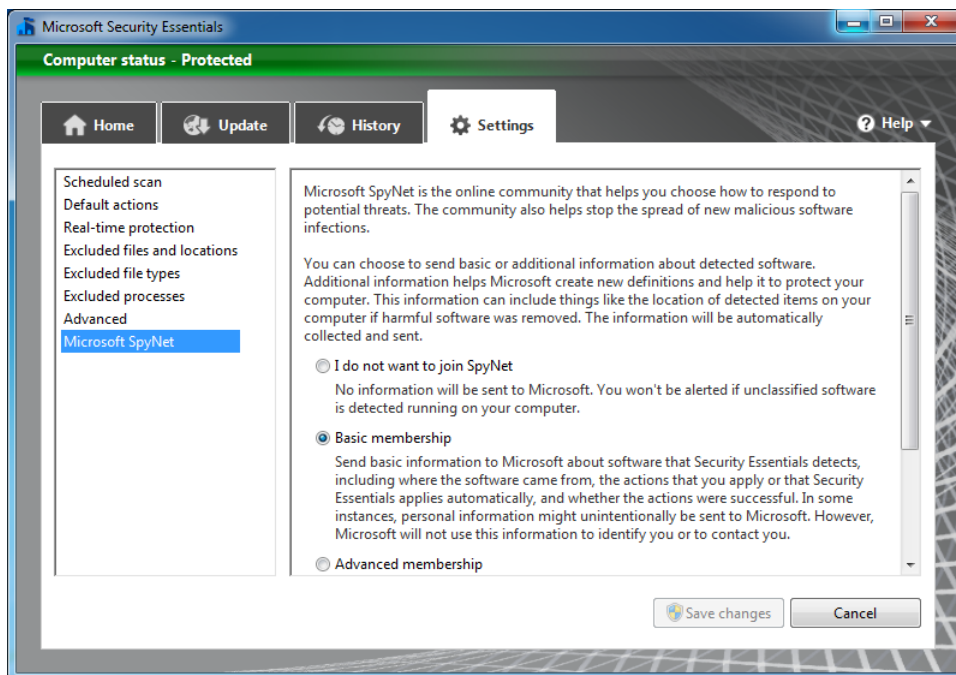
- Excluded Processes will leave any specified programs out of a scan to help speed up scans.



- The Advanced page will let you scan archives and removable drives for viruses, create system restore points, let all users view the full history and remove quarantined files after a set period of time.

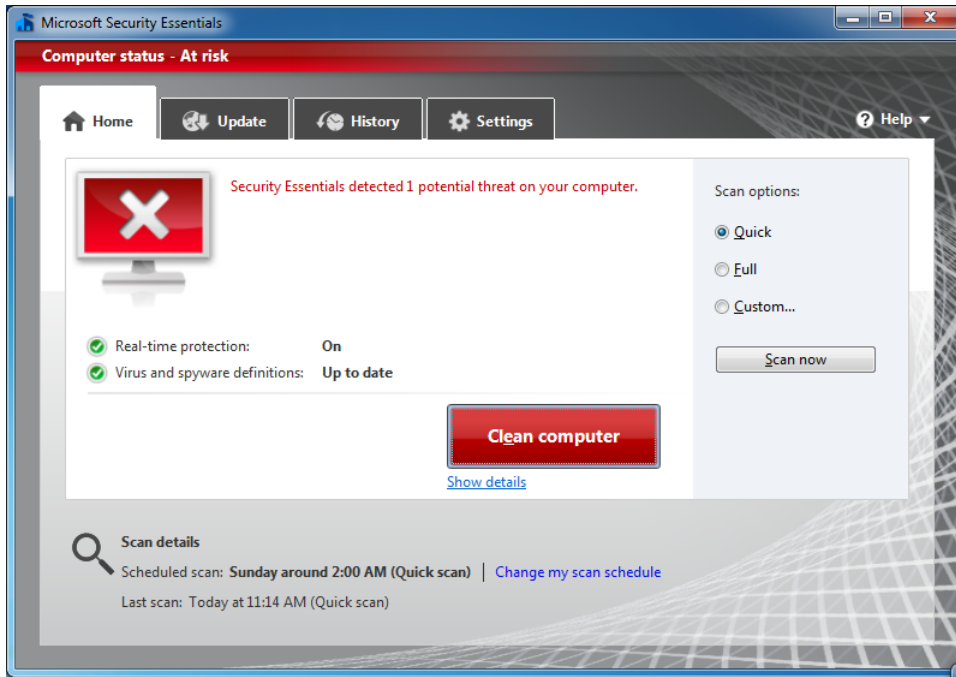


- The last page, Microsoft SpyNet, lets you manage your SpyNet membership, as well as cut it off if you wish to so that you won't send any information back to Microsoft.

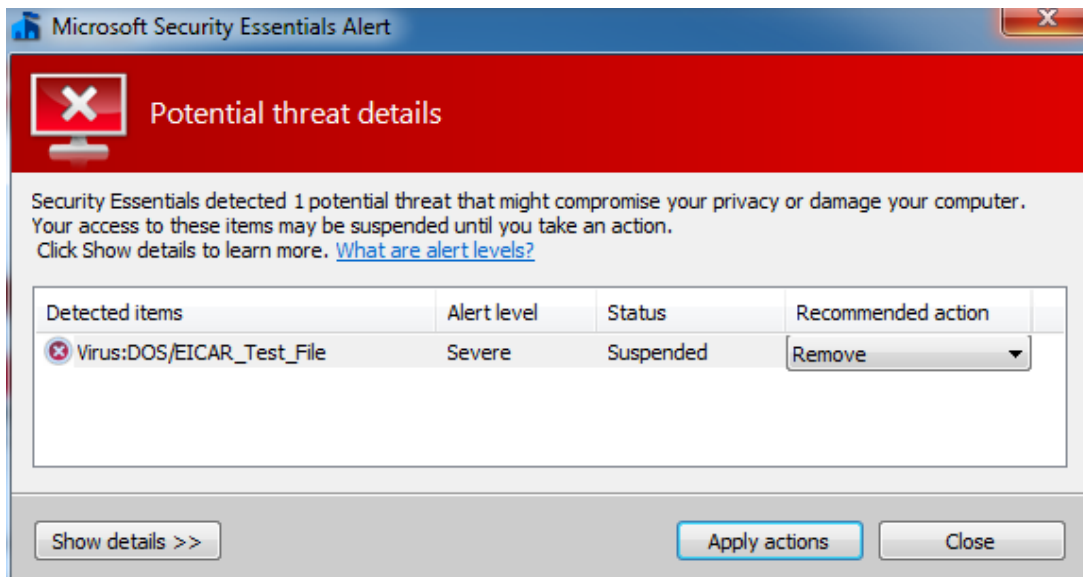


If you are running a scan on your computer and it finds a virus or other threat, MSSE should automatically take the recommended action toward the threat. This can be changed in Default Actions, shown above.

If MSSE automatically detects a threat, it will look like this on the home screen.



To get rid of this, click Clean Computer. This will pop up a window showing all the threats and the recommended action for each threat. Clicking apply Actions will take the Recommended Action on each item listed.



Sometimes when MSE detects a threat, it will pop up a small window in the bottom right corner of your screen. If it does, it will look like this. To fix the problem, simply click Clean Computer.

