

## Wind NRG Partners Manufacturing Facility:

<http://hpb.encyvermont.com/overview.cfm?ProjectID=420>

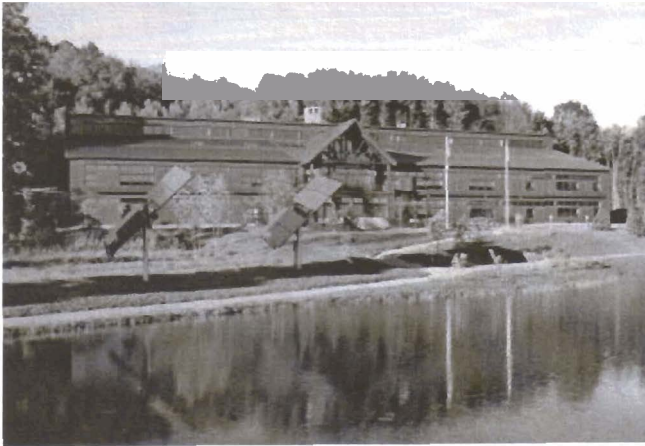


### Transportation to site

- Pedestrian/Bicycle path from the village to the building
- Showers for pedestrian and bicycle commuters
- Electric vehicle charging
- Vehicle access that supports carpooling

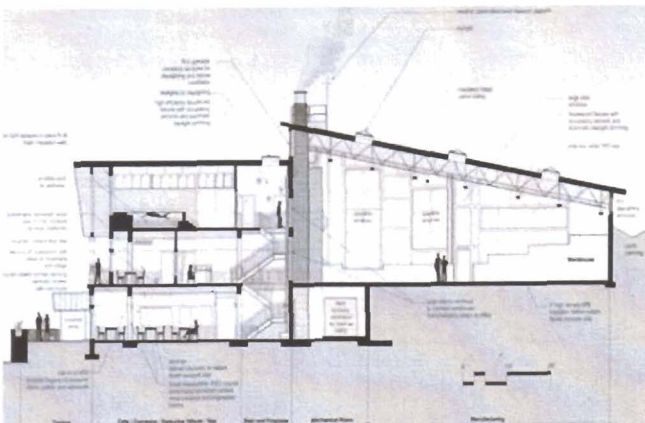
### Water use

- Landscaped with native plants which will require no irrigation
- Mechanical cooling system with rain water detention pond as a heat sink instead of a cooling tower. Pond also used for recreation
- Water conserving plumbing fixtures which help to reduce the water usage by 43%



### Energy

- Solar panels for onsite electricity generation and arrangements to sell excess energy to the grid
- South facing windows with low heat gain to capture light but not heat
- North side of building set into hillside to reduce heat loss
- Laptops used instead of desktops



### Materials

- Primary building material was steel for its durability and recyclability
- Local materials, including wood and stone from the site, used to reduce transportation impacts
- Local concrete with flyash used to embodied energy of the concrete
- Of the 340 tons of waste and debris, approximately 282 tons (83%) were reused or recycled